

# Inclusive AI in education: shaping the future together

**Jisc**

Tuesday 17<sup>th</sup> June 2025

Manya Sikombe & Catherine  
Barker

# Today

## Introduction & opening presentation

- Welcome from us
- Introduction to:
  - AI & digital inequality
  - AI & bias
  - AI & accessibility

## Workshop activity

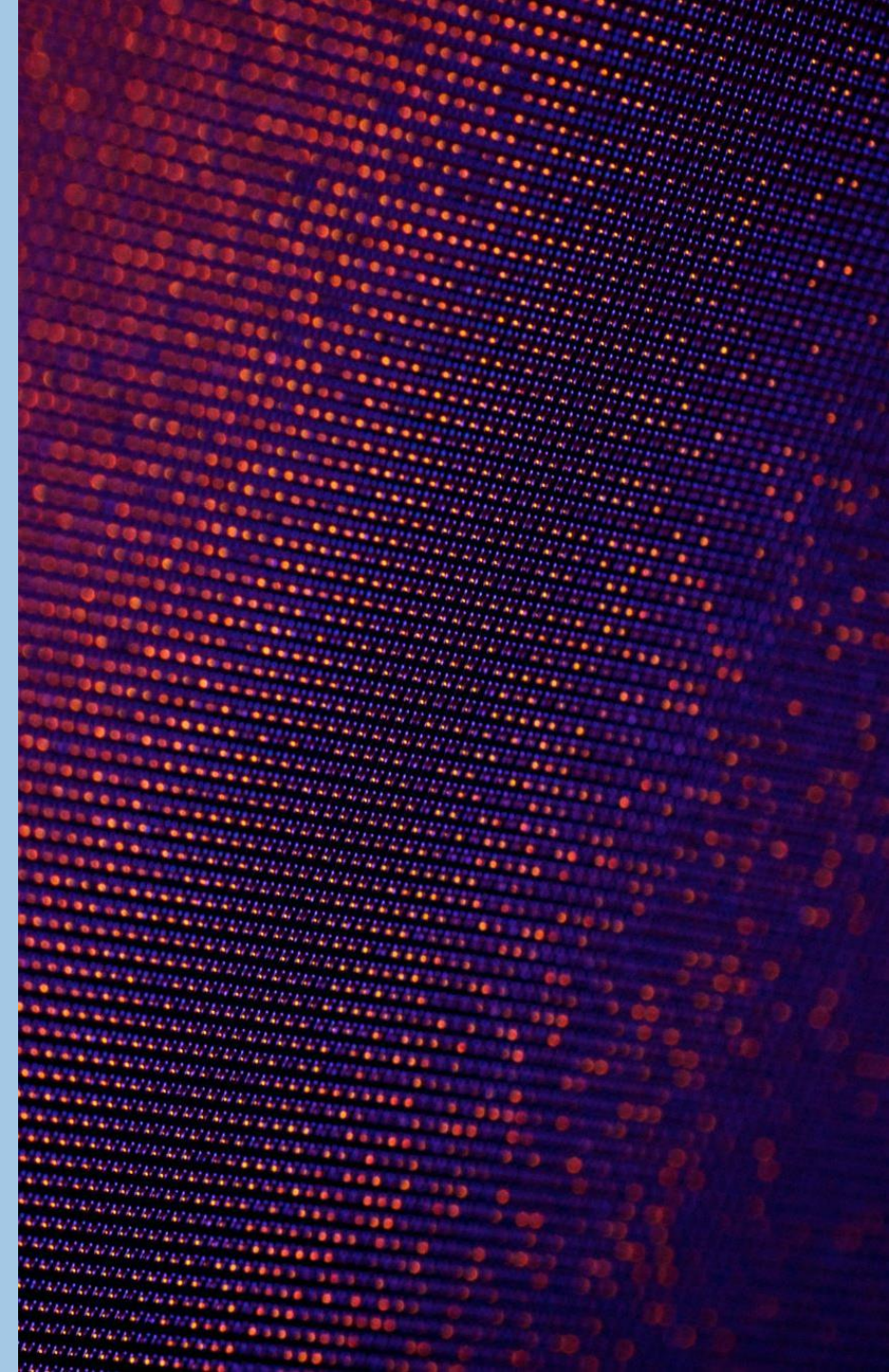
- Personas of fictional learners
- Explore barriers and opportunities
- Capture thoughts/discussion

## Feedback and discussion

- Feedback from activity
- Questions/thoughts and feelings
- Our resources

# Aims

- Leave with a greater understanding around AI & inclusivity
- Feel confident in building/maintaining a more inclusive mindset when it comes to AI in your institutions



- Jisc is the UK digital, data and technology agency focused on tertiary education, research and innovation.
- We are a not-for-profit organisation and believe education and research improves lives and that technology improves education and research.



# Artificial Intelligence at Jisc

Advice &  
Guidance

Training

Community

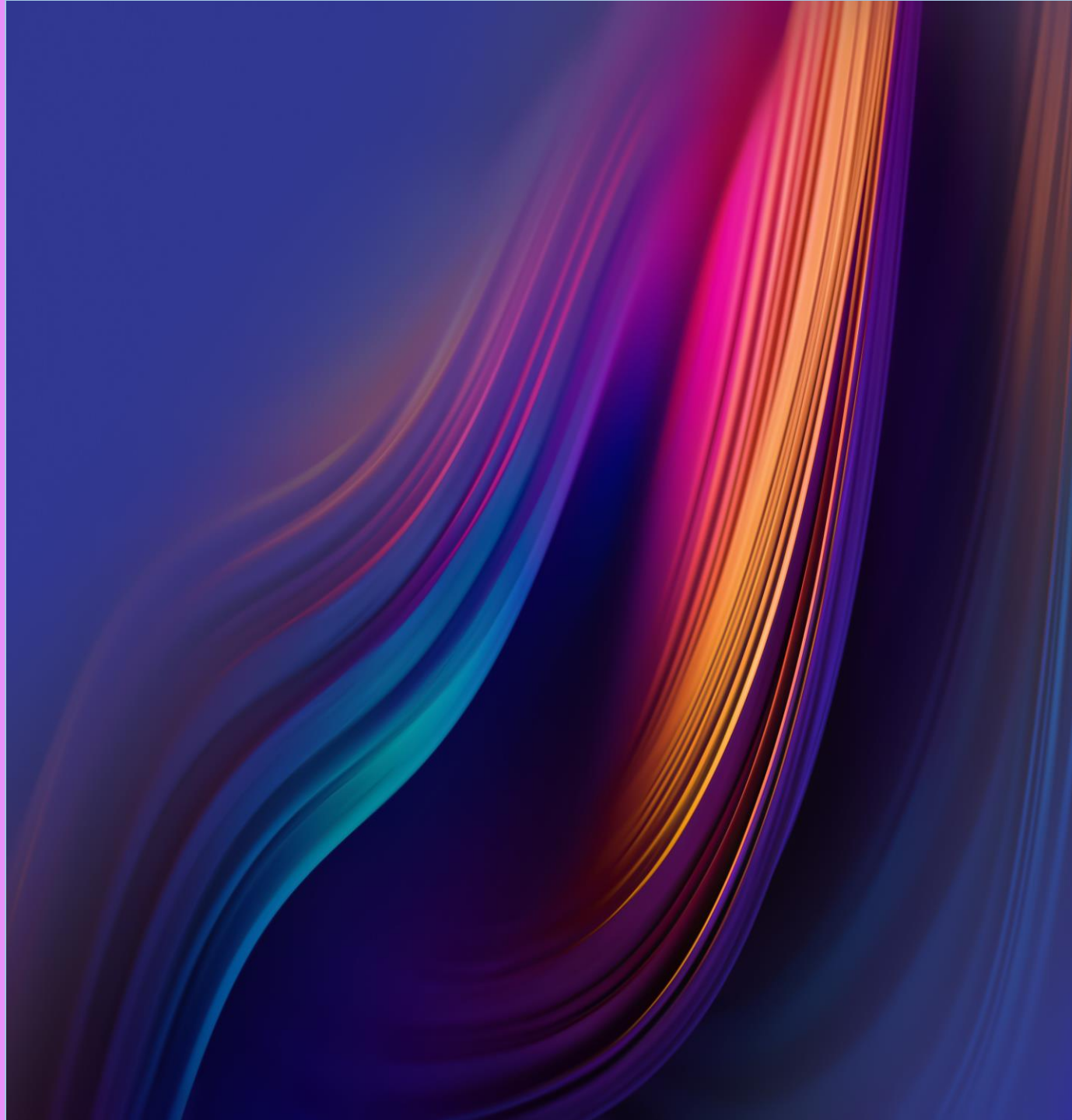
Collaborating  
and  
Advocating

<https://ji.sc/AI>





# Digital inequality



# Digital Inequality

- Cost barriers and subscription models: Free vs premium
- Internet and device access at home
- Digital literacy

# Digital Inequality

- Improving but still a difference

	ChatGPT	ChatGPT Plus
<b>Cost</b>	Free	\$20 a month
<b>Model</b>	GPT 3.5 with limited access to GPT 4o	GPT 4o  5x more usage allowance than free.
<b>GPTs</b>	Limited access to use GPTs (when using GPT 4o)	Create and use custom GPTs
<b>Images</b>	Can create but slower. Limits.	Can create. Do hit usage limits but not as quickly as free tier.
<b>Documents</b>	Limited access to data analysis, file uploads, vision, web browsing, and custom GPTs	Can analyse and use uploaded documents



# Digital Inequality

	Notes	Monthly cost
<b>Grammarly</b>	Including generative AI	£10
<b>Midjourney</b>	Image Creation	£8
<b>ChatGPT Plus</b>	Reliable access	£16
<b>Writesonic</b>	AI powered writing tool	£13
<b>Gamma</b>	Presentations	£13
<b>Scite.ai</b>	AI powered research assistant	£16
<b>Total</b>		<b>£76</b>

Bias



# Bias: AI Systems

- Training data
- Race, gender and appearance – just some examples

Table 7: Class distributions for race

Category	Model	White	Black	East Asian	Indian	Latino	Middle Eastern	Southeast Asian
Individuals	DALL-E 3	90%	0%	7%	0%	1%	2%	0%
	4o image generation	67%	19%	2%	2%	5%	5%	0%
Groups	DALL-E 3	81%	3%	13%	0%	2%	1%	0%
	4o image generation	64%	21%	4%	3%	6%	1%	0%

Table 9: Class distributions for skin tone

Prompt Set	Model	Light	Medium	Dark	Very Dark
Individuals	DALL·E 3	90%	10%	0%	0%
	4o image generation	59%	29%	12%	0%
Groups	DALL·E 3	88%	9%	3%	0%
	4o image generation	62%	24%	15%	0%

Table 5: Class distributions for gender

Prompt Set	Model	Male	Female
Individuals	DALL·E 3	86%	14%
	4o image generation	79%	21%
Groups	DALL·E 3	61%	35%
	4o image generation	56%	44%



# Perpetuating Bias

"A photorealistic, inclusive image of the disabled community"



GPT 4o 2025



DALL-E 2024



# AI bias – improvement?



Created using ChatGPT: DALL-E  
November 2024

***"Create an image of a group of doctors"***



Created using ChatGPT 4o  
June 2025



# Bias: Other areas

- Facial recognition tools
- AI detection tools: Non-native English speakers & neurodiverse people
- Recruitment
- Underrepresentation of the Global South
- Language exclusion

# Accessibility



# AI and Assistive Technology

**Grammar  
Checkers**



**Screen  
readers**



**Automatic  
captioning**



**Accessibility  
checkers**



**Translation  
tools**



**Digital  
assistants**



... and much more

# AI is helping to make learning more accessible to all

- **Goblin Tools** is designed to help neurodivergent people with tasks they find overwhelming or difficult
- **Microsoft Seeing AI** for vision
- Speech recognition is improving all the time
- AI can help to make accessible content (e.g. ALT tags)

# AI for alt text



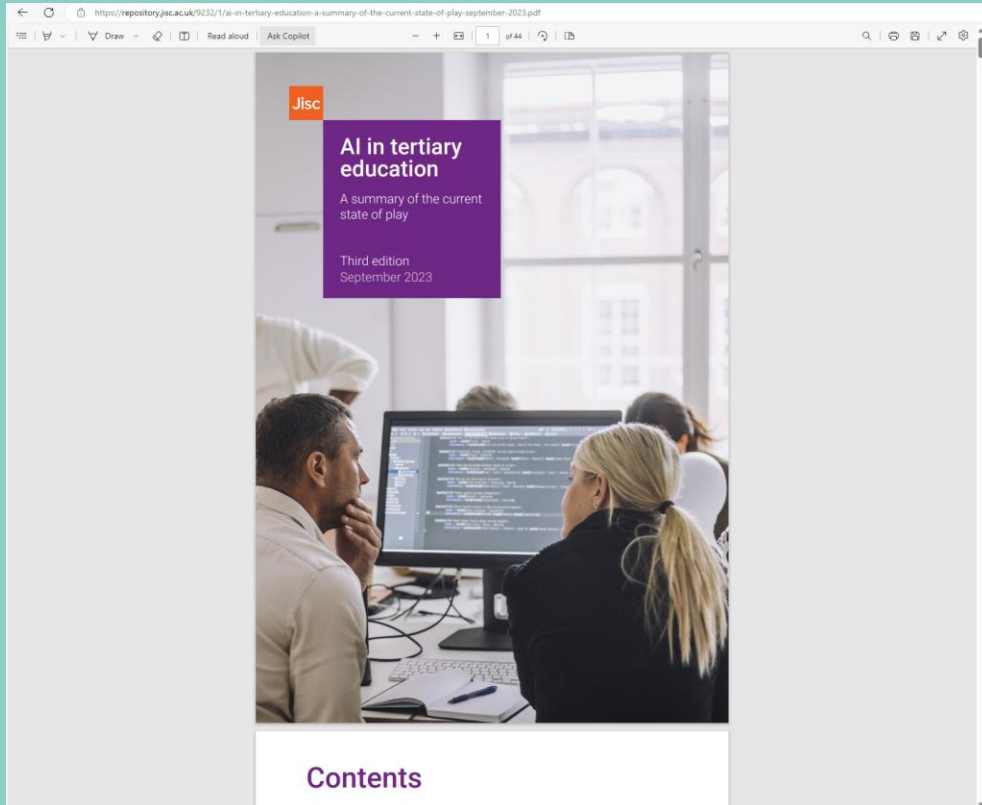
Create alt text for this image



**Alt text:** A large, fluffy pink cat with feathered wings sits majestically on the edge of a cliff at sunset. The cat gazes into the distance, with a warm, golden light illuminating its fur. Below, a quaint town nestled among rolling hills glows softly in the evening light, creating a magical and serene atmosphere.



# Summarising - PDFs



e.g., Microsoft Copilot



Please provide a summary of this PDF

✓ Searching your page for information

Your personal and company data are protected in this chat

Here is a summary of the current web page:

- **AI in tertiary education:** This is a report by Jisc that explores the types, uses, and implications of artificial intelligence (AI) in the education sector. It aims to provide a general introduction to AI, as well as guidance on ethical and legal considerations.
- **Types of AI:** The report explains the concepts and techniques behind AI, such as machine learning, deep learning, generative AI, and foundation models. It also discusses the issues of bias, transparency, environmental impact, and hidden workers in AI.
- **AI maturity:** The report presents a maturity model for AI in education, ranging from approaching and understanding to transformational. It provides examples of institutions that are at different stages of AI adoption and innovation.
- **Role of AI:** The report examines the role of AI in extending capabilities and increasing capacity for educators and learners <sup>1</sup>. It also considers the concerns and expectations of students regarding the use of AI in their learning experience.
- **Policy and guidance:** The report reviews the legal and regulatory frameworks for AI in the UK and beyond, and the ethical principles and practices for responsible AI. It also showcases some examples of AI applications in learning and teaching, such as chatbots, adaptive learning, and generative AI.

Reference: repository.jisc.ac.uk 1. Page 12 - Line 3

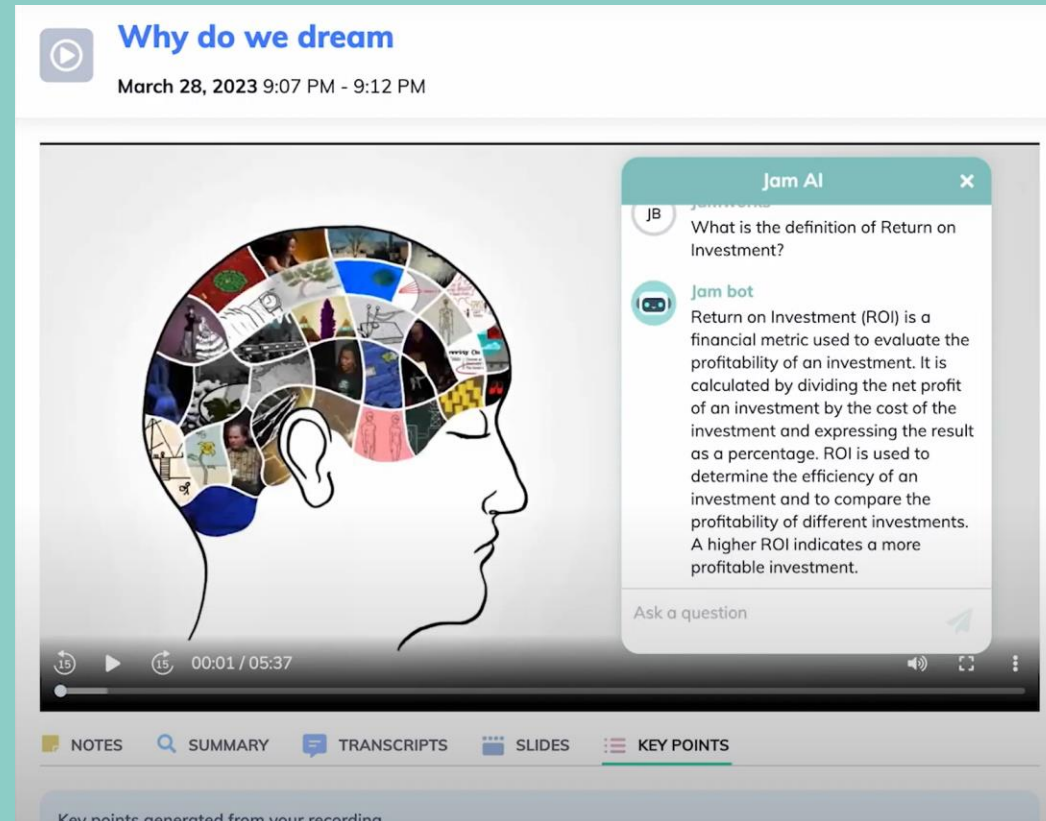
1 of 30 responses •

? Answer from the web instead What are some examples of AI in tertiary education?



# Jamworks

- Transcription and AI generated notes, summaries and quizzes
- *"disabled students are disproportionately more likely to experience challenges with attending lectures and felt that tools like Jamworks could help to level the playing field here"*



[jamworks.com](https://jamworks.com)

Jamworks Phase 1 Report: Further Education

# Inclusive AI in Education Workshop: Activity

One size fits all AI tool doesn't work.  
Inclusive design must start with real, diverse users in mind.

- In this activity, you'll read through different personas of fictional learners who face real world barriers and opportunities with AI
- Explore how AI tools might help or hinder each person's education, and how AI could better support them. Please use the discussion questions to guide you

# AI in Education community sessions

- Learn about AI challenges/opportunities
- Share and discuss best practices
- Connect with others, find shared solutions



Higher education  
(HE) community  
group



Further education  
(FE) community  
group

***Have a project or experience you'd like to share?***  
***Get in touch: [ai@jisc.ac.uk](mailto:ai@jisc.ac.uk)***

# AI digital learning modules

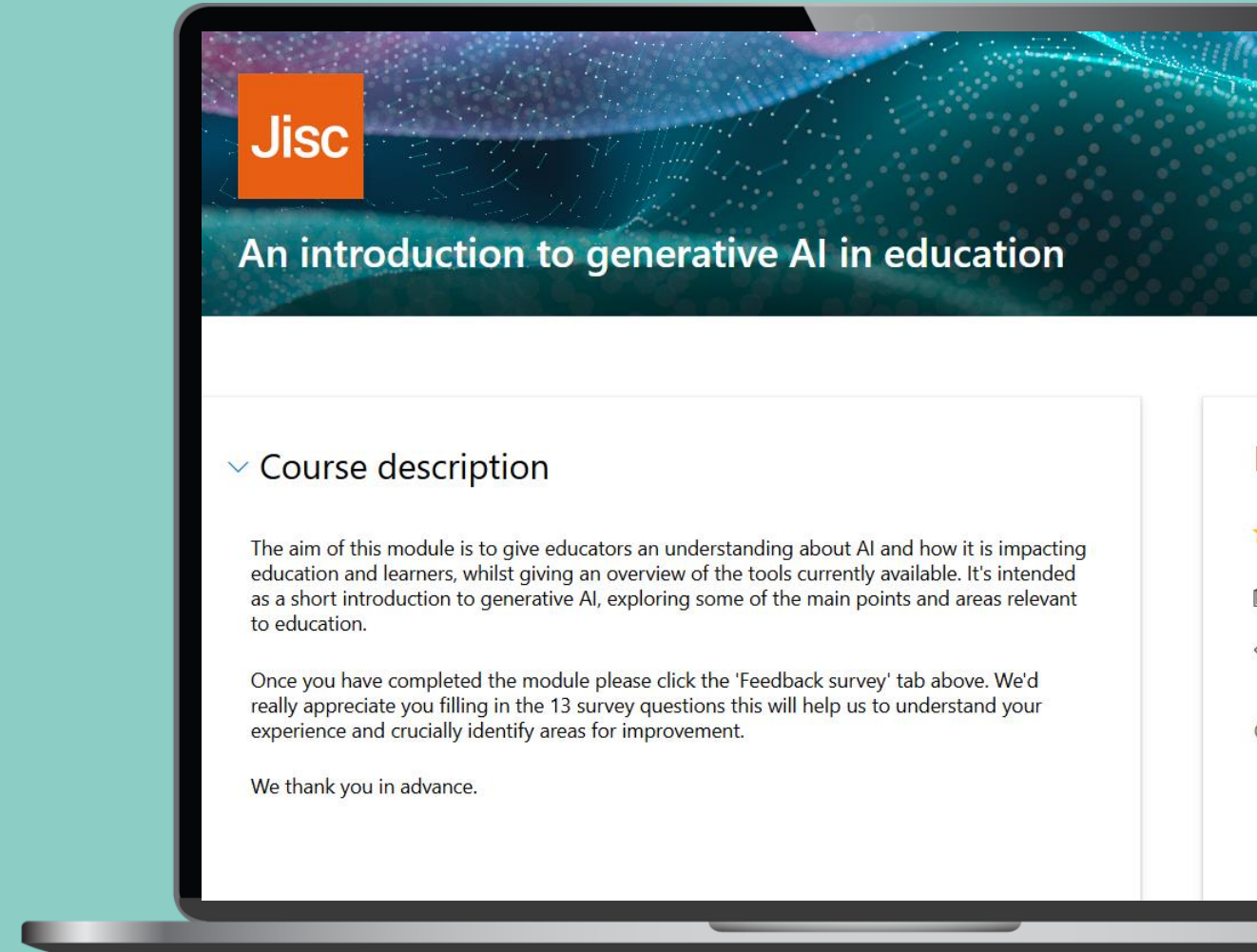


**Artificial intelligence  
and ethics**



**An introduction to  
generative AI in  
education**

**To sign up:** <https://www.jisc.ac.uk/training>

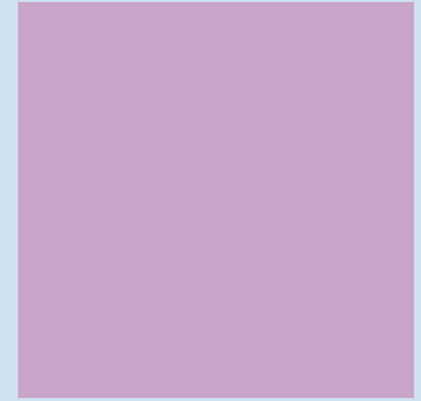


# AI Literacy Curriculum for Teaching and Learning Staff

- Gain the knowledge and skills to use AI effectively and confidently
- Running from June 2025
- **Module 1** – Understanding AI in tertiary education for teaching and learning (AI foundations and awareness)
- **Module 2** – Essential AI skills for teaching and learning (Applied AI skills)
- **Module 3** – Ethical and responsible use of AI for teaching and learning (Critical evaluation and responsible use)

**To sign up:** [Training at Jisc](#)

Thank you



**AI@jisc.ac.uk**

**Jisc**